

HERITAGE
SPORT
EVENTS
ART
DRAMA
VENUES



A GUIDE TO
St. Helens Culture
IN 2009

Contents

Welcome	03
Introducing St.Helens Live 09	04
Creative Times	06
The Bigger Picture	08
So What's the Story?	10
A Breath of Fresh Air	12
Coming Up in 2009	14
Spotlight on St.Helens Venues	20
Spotlight on St.Helens Sport	22
Spotlight on St.Helens Heritage	24
The Big Ones	26
St.Helens Cultural Awards	27
Get Involved	28
A Helping Hand with your Events	31
Your Cultural Directory	32

Disclaimer: No part of this guide may be reproduced without permission. The utmost care has been taken to ensure the accuracy and currency of all the information at the time of going to print. Some information was collected from sources outside St.Helens Council and therefore St.Helens Council accepts no responsibility for any error or omissions, or for loss, injury or inconvenience sustained as a result of information or suggestions contained in this guide. Nor does St.Helens Council accept responsibility or accuracy for the content of any outside organisations' websites.



St.Helens Festival



Big Draw, The Godfrey Pilkington Gallery



Christmas Lights Switch On

A fine time to be had in 2009



**WELCOME TO YOUR ST.HELENS GUIDE
TO CULTURE FOR THE YEAR AHEAD.**



Councillor Wally Ashcroft
Executive Member for Culture, Sport and Heritage

I am sure you will agree that in 2008 St.Helens had its own remarkable year of culture to remember, but it doesn't stop there!

This Guide allows you as participants, practitioners and performers to gain a valuable insight into a whole host of events, activities and opportunities that are taking place across our Borough throughout the year. It demonstrates just how diverse, rich and vibrant the St.Helens cultural scene really is.

I would also like to take this opportunity to thank the very many volunteers who play an integral part in our success, clearly demonstrating that St.Helens has a real passion for culture.

Culture is accessible to everyone and all of us benefit from engaging with the arts, music, dance, drama, heritage and sport. This Guide proves just how easy it is to make culture part of our lives.

So get out and about, get involved, but most of all get inspired!



The Black Dyke Band

Introducing *St. Helens Live 09*

Following on from the success of St.Helens Live 08, which saw a fantastic programme of concerts set in St.Helens Town Hall, we are proud to present ***'St.Helens Live 09'***.



St.Helens Sinfonietta

Launched in 2008, St.Helens Live saw thousands of people accessing for the first time a diverse range of inclusive evening events set in St.Helens Town Hall's impressive and historic Assembly Hall.

This year the inspiring programme of concerts grows even bigger, with more renowned names involved, from classical and choral, to brass and swing. Also for 2009 we will be hosting a special series of tea dances from 2pm-4pm, which will be a mixture of Sequence, Modern Ballroom and Olde Tyme music.

With additional events being added throughout the year, look out for the St.Helens Live 09 brand across the town centre for full programme details.



2009 Highlights

St. George's Celebration

25th April

As part of a series of events to commemorate St. George's Day, this evening's concert will feature performances by the multi-award winning Tintwistle Band and Haydock's finest Valley Brass.

St. Helens Gilbert & Sullivan Society

11th June

A fantastic night for all the family with a variety of songs from musical theatre, both past and present, performed by St. Helens Gilbert & Sullivan Society.

The Cory Band

3rd October

Recognised internationally as one of the finest and most innovative music ensembles, playing award-winning works by leading composers, the 2008 European Brass Band Champions, The Cory Band, make the journey from the Rhonda Valley to St. Helens for what guarantees to be an event to remember.



The Black Dyke Band

St. Helens Sinfonietta

28th November

The renowned St. Helens Sinfonietta make a welcome return to the Assembly Hall for another unforgettable performance of Beethoven, Bruch and Schubert plus the first performance of *Shadow Over Parinacota* by St. Helens composer David Forshaw.

Tickets for this event are available directly from St. Helens Sinfonietta at www.sinfonietta.org.uk or by telephoning Lynn Wallace on 01744 600846, or Helen Free on 01744 616635.

Christmas at the Hall

18th December

An evening of festive celebrations for young and old, showcasing local musical talent, bringing this year's calendar of events to a close.

St. Helens Live 09 Tea Dances:

Thursday 2nd April

Thursday 7th May

Thursday 2nd July

Thursday 17th September

Thursday 1st October

Thursday 12th November

Thursday 3rd December

For further information about St. Helens Live 09, including event details and how to book tickets, call 01744 676886 or visit www.sthelens.gov.uk/sthelenslive

Creative Times

The Godfrey Pilkington Art Gallery is a dedicated space for our cultural community.

Annually, the town centre venue showcases a varied and engaging programme of fine art, craft and photography in collaboration with schools, colleges and art clubs, while at the same time developing links with national touring exhibitions and our Borough's international partners in Stuttgart, Germany and Chalon-sur-Saône, France.

Running alongside this diverse range of exhibitions, the Gallery also hosts a variety of artist talks, workshops and activities to expand St. Helens residents' access to the arts. It encourages future and emerging artists of all ages and abilities and provides the opportunity to develop creative skills, while most importantly having lots of fun.

Programme highlights include the Big Draw, a national family-friendly event held throughout October, and December's Open Art Competition, which invites all artists who currently study, work or live in St. Helens, whether amateur or professional, to submit works. There is even an impressive £1,900 prize fund up for grabs.

The Godfrey Pilkington Art Gallery supports all locally based artists in the development of their careers and anyone can apply to have their work exhibited. Simply complete an application form, which is available from the Arts Service and it will be considered by the Gallery's Steering Committee.

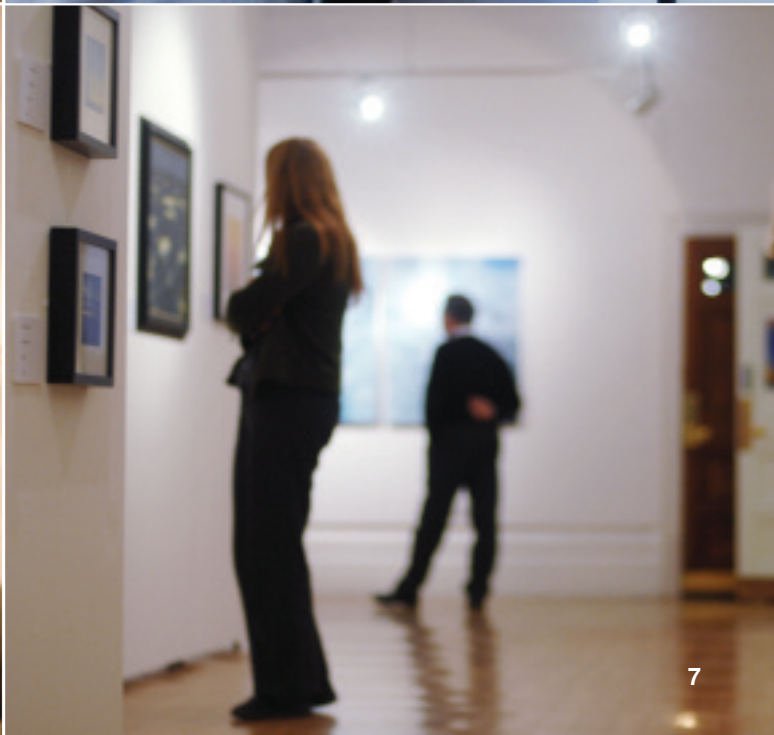
Admission to the Gallery is free and open Monday to Saturday (10am-4pm), closed Sundays and Bank Holidays.

For more information about this year's exhibitions, turn to page 14, or contact the Arts Service on 01744 455493.

All images taken at events and exhibitions at The Godfrey Pilkington Art Gallery.



THE GODFREY PILKINGTON
ART GALLERY





THE

BIGG

PICTURE

In Spring 2009 St.Helens will become the focus of thousands of TV viewers as Channel 4's biggest budget arts programme ever "The Big Art Project" takes to our screens.

The initiative supported by Arts Council England and The Art Fund has chosen Sutton Manor Colliery as one of only 7 UK locations to take part after over 1,400 sites were publicly nominated.

Our commission, "Dream" has been created by world-renowned artist Jaume Plensa, a form of a girl's head with her eyes closed, seemingly in a dream-like state, which will stand 20 metres high and be fabricated in pre-cast concrete, with a white, almost luminescent finish using a marble/concrete mix.

Dream is being delivered by St.Helens Council, in association with the Big Art Trust and national funders and is intended to echo the rich cultural history of the location, the passion and enthusiasm of the ex-miners who nominated it, as well as putting St.Helens on the map.

By the end of the year St.Helens will have a new iconic landmark, stating our place as the gateway to Merseyside and the heart of the Northwest.

To find out more about Dream and the "Big Art's Little Art" programme visit www.bigartsthelens.com or contact Tanya Humphreys on 01744 675687 or email tanya@bigartsthelens.com

ER



st.helens

The Heart of the Northwest

"Dream" by Jaume Plensa



Haydock Library

St.Helens has 13 libraries spread across the Borough, with customers ranging from just a few days old to over 100 years, with this having to be reflected in the services provided.

From national schemes designed to promote free books and reading to children, for example Bookstart, Book Ahead and Booktime, St.Helens libraries also hosts activities designed to bring stories alive. Highlights include the annual “Summer Reading Challenge”, which asks youngsters to read any six books over the summer break, with an amazing 1,255 children in the Borough taking part in 2008, each being awarded their Summer Reading Challenge medal. There is also the annual Creative Writing Competition, which continually attracts entrants of the highest standard.

Over the coming year the new “Open Doors” project will begin, which will see our local history catalogue computerised, making the invaluable resources of archive much more accessible.

In 2009 a “New Service Concept” for the libraries is being rolled out, building on the existing People’s Network areas, and aiming to make libraries “Community hubs”. At the heart of this change is a massively increased ICT provision, particularly for teenagers, and new spaces will be created that can be used to meet customer’s information, advice or learning needs. This is an exciting new project and in no way means that books will become less important. On the contrary, book buying and stock management procedures are being overhauled to ensure that titles are refreshed and moved more frequently between libraries.

St.Helens Library Service has set itself an ambitious agenda for change and is looking forward to working with the community to develop the new Library hubs as focal points for local neighbourhoods.

To contact your local library, see page 35 for details.

SO WHAT'S THE STORY?

Superhero Day, Central Library



Haydock Library



Old McDonald and the 3 Pigs Plus,
Central Library



St.Helens Libraries continue to host a number of family-friendly events throughout the year, including:

Fireman Sam Day

19th February

10.00am

Haydock Library

Dr Who Day


21st February

Time to be confirmed

Chester Lane Library

For more information about St.Helens Libraries and events, please visit www.sthelens.gov.uk/libraries or call 01744 677081.

ABRE FRESH



In 2009 St.Helens Ranger Service celebrates its 30th year in operation, and there is so much for us to get involved in.

With nine Green Flag status parks, miles of public open space, a programme of free events and a comprehensive range of educational activities, we really should get to know our Rangers better and celebrate our natural heritage and environment.

Thousands of local people benefit every year from attending guided walks, which take in the lesser-

known rural side of St.Helens, learn about traditional crafts, such as willow weaving and thatching or get their hands dirty by helping plant trees and bulbs.

So pack a family picnic, put on your walking boots, drag the bike out of the shed and get involved in your local countryside.

St.Helens Ranger Service has four visitors' centres, which can be contacted directly for more event information and advice, see page 36 for details.

View from Billinge Hill

PATH OF HAI R



Feed The Birds



Halloween Fright Night

Upcoming events include:

Christmas Tree Recycling 11th January 10am-3pm - Taylor Park & Mesnes Park

Bird Walk 11th January 9am - Sankey Valley Country Park

Feed the Birds 8th February 1-2pm - Sherdley Park

Bird Box Making 15th February 3pm - Taylor Park

Guided Walk – Garswood Loop 15th February 10.30am - Sankey Valley Country Park

Coming up in 2009

January

- SOUP** The Citadel – January - March
- 11** **Christmas Tree Recycling** Taylor Park & Mesnes Park - 11th January
- 11** **Bird Walk** Sankey Valley Country Park - 11th January
- 13** **St.Helens Organ Society – Dave Smith** West Park Rugby Club - 13th January
- 24** **Nearly Dan** The Citadel - 24th January
- 24** **North of England Cross Country** Sutton Leisure Centre - 24th January
- 27** **Edge of Môn** **The World of Glass** - 27th January – 22nd March
An exhibition by leading glass artist Mike Lees.
- 28** **Oh! What a Lovely War** Rainford High Technology College - 28th – 30th January
- 28** **Inspirational Objects** **The World of Glass** - 28th January – 22nd March
An exhibition of inspirational work from Glyndwr University.
- 30** **Mixed Media Group Show** **The Godfrey Pilkington Art Gallery**
30th January – 10th February
Exhibition by Carmel College.
- 30** **St.Helens Tourism & Leisure Awards** Haydock Park - 30th January
- 31** **Johnny Vegas Show** Theatre Royal - 31st January



The Godfrey Pilkington Art Gallery

February

- Now Showing** **St.Helens College** - February – April
Following on from the success of Field for the British Isles, another exhibition from the Hayward Gallery collection.
- 3** **One Night in Vegas** Theatre Royal - 3rd February
- 7** **Connie Lush & Blues Shouter** The Citadel - 7th February
- 8** **Feed the Birds** Sherdley Park - 8th February
- 10** **St.Helens Organ Society – Richard Monks** West Park Rugby Club - 10th February
- 14** **Stardust** Theatre Royal - 14th February
- 15** **Billy & Wally's Big Mowtown, Pop & Comedy Night** Theatre Royal - 15th February

- 15** **Bird Box Making** **Taylor Park** - 15th February
- 15** **Guided Walk** **Sankey Valley Country Park** - 15th February
- 16** **Art FM** **The Godfrey Pilkington Art Gallery** - 16th – 26th February
Exhibition by Fourways Children’s Centre Art Project.
- 19** **Fireman Sam Day** **Haydock Library** - 19th February
- 21** **Dr Who Day** **Chester Lane Library** - 21st February
- 21** **Dr Feelgood** **The Citadel** - 21st February
- 25** **Les Misérables** **Cowley Language College** - 25th – 27th February
- 27** **St.Helens Youth Cultural Awards** **The World of Glass** - 27th February
- 28** **St.Helens Cultural Awards** **The World of Glass** - 28th February
- 28** **St.Helens Sinfonietta February String Concert** **St.Thomas’ Church** - 28th February
- 28** **Vin Garbutt** **The Citadel** - 28th February

March

- 5** **Circus** **The Godfrey Pilkington Art Gallery** - 5th – 21st March
Exhibition by St.Augustine of Canterbury Catholic High School.
- 7** **The Lancashire Hotpots** **The Citadel** - 7th March
- 7** **Goldilocks & The 3 Bears** **Theatre Royal** - 7th & 8th March
- 10** **St.Helens Organ Society – Mike Hall** **West Park Rugby Club** - 10th March
- 15** **Ed Byrne** **Theatre Royal** - 15th March
- 20** **Freddie Starr** **Theatre Royal** - 20th March
- 21** **Martin Simpson** **The Citadel** - 21st March
- 26** **St.Helens Gang Show** **Theatre Royal** - 26th – 28th March
Annual variety show performed by members of St.Helens scouts and guides.
- 27** **Public Art ‘Training For Real’ Project** **The Godfrey Pilkington Art Gallery** - 27th March – 11th April
Funded by The Field Fund.
- 28** **Ian McNabb** **The Citadel** - 28th March
- 29** **Circus Hilarious** **Theatre Royal** - 29th March

30 **Sweeney Todd** Carmel College - 30th March – 2nd April

31 **Trees and Other Things** **The World of Glass** - 31st March – 17th May
A beautiful and unusual exhibition of paintings by Lawrence Johnson.

April

2 **St.Helens Live 09 – Tea Dance** **St.Helens Town Hall** - 2nd April

5 **An Evening with Blowers** **Theatre Royal** - 5th April

7 **Eat, Drink and Be Merry** **The World of Glass** - 7th April – 17th May
An exhibition exploring the history of food, drink and merriment from the Pilkington Glass and St.Helens Council collections.

11 **Wearing the Trousers** **Smithy Heritage Centre** - 11th April – 28th June
An exhibition looking at the changing role of women through the ages.

14 **St.Helens Organ Society – Andrew Seddon** **West Park Rugby Club** - 14th April

17 **Rainhill High Sixth Form Exhibition 2009** **The Godfrey Pilkington Art Gallery**
7th April – 2nd May Exhibition by Rainhill High.

25 **St.Helens Live 09 – St.George’s Celebration** **St.Helens Town Hall** - 25th April

25 **Joe Longthorne** **Theatre Royal** - 25th April

May

2 **Showaddywaddy** **Theatre Royal** - 2nd May

2 **St.Helens Sinfonietta Wind Instruments Concert** **United Reformed Church** - 2nd May

7 **St.Helens Live 09 – Tea Dance** **St.Helens Town Hall** - 7th May

8 **Location** **The Godfrey Pilkington Art Gallery** - 8th – 23rd May
Curated mixed media group exhibition showcasing local artists.

9 **An Adult Evening with Billy Pearce** **Theatre Royal** - 9th May

12 **St.Helens Organ Society – Tony Stace** **West Park Rugby Club** - 12th May

16 **Haydock Male Voice Choir Concert** **St.Helens Parish Church** - 16th May

21 **We’ll Meet Again** **Theatre Royal** - 21st May

23 **International Blacksmith Day** **Smithy Heritage Centre** - 23rd May

23 **Natural Goes Modern** **The World of Glass** - 23rd May – 12th July
Exhibition by award-winning glass artist Barry Cooper.

- 25** **Crafts Display** **Willow Park - 25th May**
St.Helens Ranger Service annual event to introduce the public to rural crafts and traditions of bygone times.
- 27** **St.Helens Sinfonietta Lunchtime Recital** **United Reformed Church - 27th May**
- 29** **Gordon Humphries Solo Painting Exhibition** **The Godfrey Pilkington Art Gallery**
29th May – 10th June

June

- 6** **March & Hymn Tune Festival*** **Victoria Square - 6th June**
- 9** **St.Helens Organ Society – Brett Wales** **West Park Rugby Club - 9th June**
- 11** **St.Helens Live 09 – St.Helens Gilbert & Sullivan Society** **St.Helens Town Hall**
- 11th June
- 12** **Magic of Mowtown** **Theatre Royal - 12th June**
- 16** **Becoming Artists** **The Godfrey Pilkington Art Gallery - 16th – 27th June**
Exhibition by Cowley Language College.
- 20** **St.Helens Sinfonietta Viennese Evening** **United Reformed Church - 20th June**



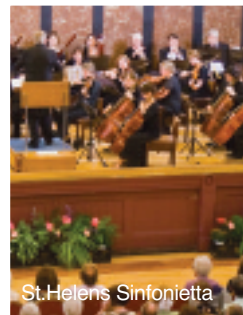
Brouhaha Festival

July

- 2** **St.Helens Live 09 – Tea Dance** **St.Helens Town Hall - 2nd July**
- 4** **St.Helens Festival** **Sherdley Park - 4th & 5th July**
A cultural celebration of arts, heritage and sport.
- 4** **Once Upon a time in the North** **Smithy Heritage Centre - 4th July – 13th September**
A look at literature and authors with a Northern affiliation.
- 4** **Merseyside Primary Games** **The Oval, Bebington - 4th July**
- 7** **Thursday Art Group Annual Exhibition** **The Godfrey Pilkington Art Gallery - 7th – 17th July**
- 7** **Annual Art Exhibition** **De La Salle School - 7th – 9th July**
- 14** **St.Helens Organ Society – James Sergeant** **West Park Rugby Club - 14th July**
- 18** **Painting Thin Air** **The World of Glass - 18th July – 13th September**
A series of new paintings by artist Paul Cousins.
- 18** **Brouhaha Festival*** **Church Square - 18th July**
- 21** **All Dressed Up** **The World of Glass - 21st July – 13th September**
An eclectic costume exhibition from the Georgian period through to the 1980's.
- 24** **Nathaly Deges & Natalie Hoffmeister** **The Godfrey Pilkington Art Gallery - 24th July – 7th August**
- 29** **St.Helens Sinfonietta Lunchtime Recital** **United Reformed Church - 29th July**

August

- 8** **Eclectica Music Festival*** **Victoria Square - 8th August**
- 11** **St.Helens Organ Society – Jon Smith** **West Park Rugby Club - 11th August**
- 14** **St.Helens Camera Club Annual Exhibition** **The Godfrey Pilkington Art Gallery**
14th – 29th August
- 14** **Newton Music Festival*** **Mesnes Park - 14th – 16th August**
- 26** **St.Helens Sinfonietta Lunchtime Recital** **United Reformed Church - 26th August**



September

- 8** **The Forgotten Garden** **The Godfrey Pilkington Art Gallery - 8th – 25th September**
Exhibition by GylInn Davies in collaboration with Age Concern.
- 8** **St.Helens Organ Society – Roger Latham** **West Park Rugby Club - 8th September**
- 12** **Heritage Open Days*** **Throughout the Borough - 12th & 13th September**
- 12** **Medieval Merriment at the Smithy** **Smithy Heritage Centre - 12th & 13th September**
- 14** **St.Helens Comedy Festival*** **Town Centre - 14th – 20th September**
- 17** **St.Helens Live 09 – Tea Dance** **St.Helens Town Hall - 17th September**
- 19** **Mugenkyo Taiko Drummers** **Theatre Royal - 19th September**
- 20** **Challenge St.Helens** **Victoria Square - 20th September**
1km family fun run and 5km race.
- 22** **New Found Lands** **The World of Glass - 22nd September – 15th November**
Exhibition by landscape photographer Darren Holman.
- 22** **Chandelier @ Sankey** **The World of Glass - 22nd September – 15th November**
An exhibition by Great Sankey High School inspired by the Manchester Airport chandelier.
- 30** **Ponigadoon** **St.Helens Theatre Royal - 30th September – 3rd October**
St.Helens Amateur Operatic Society annual show.

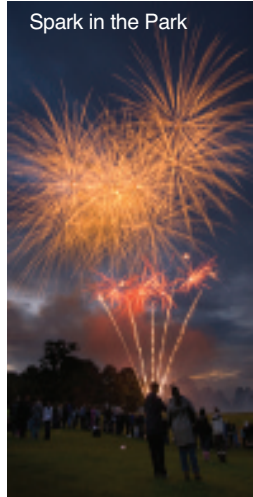
October

- 1** **St.Helens Live 09 – Tea Dance** **St.Helens Town Hall - 1st October**
- 3** **St.Helens Live 09 – The Cory Band** **St.Helens Town Hall - 3rd October**
- 4** **Art Club St.Helens Annual Exhibition** **The Godfrey Pilkington Art Gallery - 4th – 16th October**

- 10** **The Big Draw** **The Godfrey Pilkington Art Gallery** - 10th October
With professional local artist Paul Cousins, we would like to invite you and the whole family to enjoy a fun day drawing in the gallery!
- 13** **St.Helens Organ Society – Chris Powell** **West Park Rugby Club** - 13th October
- 23** **Threadmill** **The Godfrey Pilkington Art Gallery** - 23rd October – 7th November
Group show of Contemporary Textiles and Mixed Media Art.
- 28** **St.Helens Sinfonietta Lunchtime Recital** **United Reformed Church** - 28th October

November

- 1** **Spark in the Park** **Sherdley Park** - 1st November
Spectacular annual fireworks display, lighting up the skies in style.
- 10** **St.Helens Organ Society – Mark Thompson** **West Park Rugby Club** -
10th November
- 12** **St.Helens Live 09 - Tea Dance** **St.Helens Town Hall** - 12th November
- 13** **Dominic Kirwan** **Theatre Royal** - 13th November
- 14** **Christmas Lights Switch-On** **Victoria Square** - 14th November
- 20** **The Searchers** **Theatre Royal** - 20th November
- 24** **Beads & Bangles** **The World of Glass** - 24th November – 17th January
Your chance to see and buy unique jewellery.
- 28** **St.Helens Live 09 – St.Helens Sinfonietta** **St.Helens Town Hall** - 28th November



December

- 3** **St.Helens Live 09 – Tea Dance** **St.Helens Town Hall** - 3rd December
- 8** **St.Helens Organ Society – Sarah Foley** **West Park Rugby Club** - 8th December
- 14** **Lantern Procession*** **Church Square** - 14th December
- 18** **St.Helens Live 09 – Christmas at the Hall** **St.Helens Town Hall** - 18th December
- St.Helens Open Art Competition** **The Godfrey Pilkington Art Gallery**
Annual exhibition of selected local artists.

- *** **to be confirmed** For more information, please visit www.visitshelens.com, email info@visitshelens.com or call St.Helens Tourist Information Centre on 01744 755150.
Information correct at time of going to print, St.Helens Council accepts no responsibility or liability for any changes to any aspect of any events listed.



The Citadel

The Citadel

Waterloo Street, St.Helens WA10 1PX

01744 735436 www.citadel.org.uk

Situated in the heart of St.Helens Town Centre, The Citadel is not just an arts venue but also a tourism destination. Shortlisted for Best Performance Venue at the 2008 Mersey Partnership Tourism Awards, the venue showcases local, national and international talent and provides a wide spectrum of cultural activities for all ages including, theatre, comedy, film, dance and art in addition to the renowned music programme.

Future events include:

SOUP

January - March

Nearly Dan

24th January

Connie Lush & Blues

Shouter

7th February

Dr Feelgood

21st February

Vin Garbutt

28th February

The Lancashire Hotpots

7th March

Martin Simpson

21st March

Ian McNabb

28th March



The Citadel

For details of more venues, see page 39, or call St.Helens Tourist Information Centre on 01744 755150 or visit www.visitsthelens.com

ST.HELENS VENUES

Theatre Royal

Corporation Street, St.Helens WA10 1LQ
01744 756000 www.sthelenstheatreroyal.com

The Theatre Royal is the principal theatre in St.Helens. Recently renovated internally and externally with a modern glass exterior, St.Helens Theatre Royal has a 700-seat capacity and stages performances all year round, including comedy, music, drama and excellent Christmas pantomimes. The theatre provides a wide variety of entertainment from top class comedians to musical shows.

Future events include:

Johnny Vegas Show

31st January

One Night in Vegas

3rd February

Stardust

14th February

Billy & Wally's Big Mowtown, Pop & Comedy Night

15th February

Goldilocks & The 3 Bears

7th & 8th March

Ed Byrne

15th March

Freddie Starr

20th March

Circus Hilarious

29th March

An Evening with Blowers

5th April

Joe Longthorne

25th April

Showaddywaddy

2nd May

An Adult Evening with Billy Pearce

9th May

We'll Meet Again

21st May

Magic of Mowtown

12th June

Mugenkyo Taiko Drummers

19th September

Dominic Kirwan

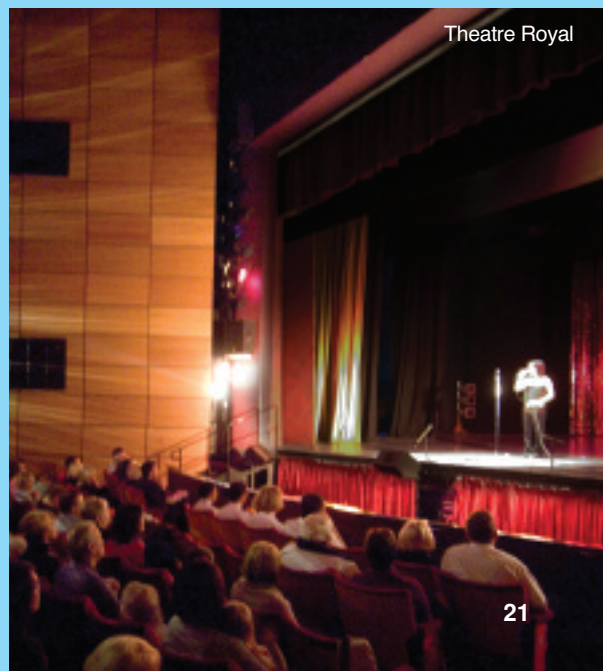
13th November

The Searchers

20th November



Theatre Royal



Theatre Royal



Sherdley Park Golf Course

Sherdley Park Golf Course

Sherdley Road, St.Helens WA9 5DE

01744 813149 www.sthelens.gov.uk/goactive

Opened in 1974, Sherdley Park Golf Course is one of the top 'pay and play' courses in the North West. The undulating 18-hole parkland course is open daily from first light until dusk and bookings are accepted from 6.30am midweek and 6.00am at weekends during the summer months. The course, measuring 5,912 yards at par 71, provides a challenge to golfers of all abilities. If you are just starting out, or trying to improve, a resident PGA professional can help you progress. If you don't have time for a full 18-hole game, you can also practise at the modern 12-bay Sherdley Park Driving Range.



Haydock Park Racecourse

Haydock Park Racecourse

Newton-le-Willows WA12 0HQ

01942 725963 www.haydock-park.co.uk

For sheer excitement and value for money, there are not many sports that can offer as much as a day at the races. Meetings last for much of the day and the thrill and spectacle is second to none. Combine this with Haydock Park's superb hospitality facilities and entertainment and you are onto a winning formula, with a festival of top quality racing throughout the year and the very best in corporate hospitality, leisure and entertainment.

ST.HELENS SPORT

St.Helens Rugby League Club

Dunriding Lane, St.Helens WA10 4AD
01744 455050 www.saintsrlfc.com

2008 proved another successful year for Saints, as they went on to not only win the Challenge Cup but also the League Leaders Shield. So in 2009 why not take the whole family to a Saints match to cheer on our local champions, be part of the entertainment and see some top class rugby. Family ticket discounts are also available for home games, so make sure you're there to cheer them on against Wigan, Warrington and Leeds.



2008 Challenge Cup Final

Powerboat Racing @ Carr Mill Dam

Old Garswood Road, St.Helens WA11 7LZ
01744 25494 www.lprc.info

Carr Mill Dam is Merseyside's largest body of inland water and a firm favourite for all water sport enthusiasts. Creating a picturesque and dramatic backdrop for Lancashire Powerboat Racing Club's regular competitive, high-speed racing events, which are held throughout the year, the highlight of which is the National Championships in May.

For details of more sporting attractions see page 37, or call St.Helens Tourist Information Centre on 01744 755150 or visit www.visitsthelens.com



Powerboat Racing



The World of Glass

The World Of Glass

Chalon Way East, St.Helens WA10 1BX
08700 11 44 66 www.worldofglass.com

It is little wonder The World of Glass is award-winning, with not only the museum itself, with live glassblowing and over 30 stunning displays and shows, but visitors can also spend time in the 'Level One Gallery' which showcases artists' work from across the region, purchase bespoke items from the gift shop or sit back and relax in the Kaleidoscope Café.



Rainhill Trials Virtual Museum

Rainhill Trials Virtual Museum

www.rainhilltrials.com

The Rainhill Trials of 1829 and the role of St.Helens in the birth of British railways has been brought to life with the online launch of a 'virtual' museum. St.Helens Council has worked with St.Helens-based Zut Media in partnership with Rainhill railway and heritage groups to create the website which uses a mixture of interactive technology and video to illustrate and commemorate the Trials.

ST.HELENS HERITAGE

North West Museum of Road Transport

Hall Street, St.Helens WA10 1DU

01744 451681 www.hallstreetdepot.info

The North West Museum of Road Transport stands out from other places to visit in the North West because it is a voluntary organisation, with members freely giving their time, keen to show visitors the rich transport heritage of our region. As one of the most unusual and interesting things to do locally, the museum houses a limited collection of vehicles owned by individuals, groups and of course the museum itself.



The North West Museum of Road Transport

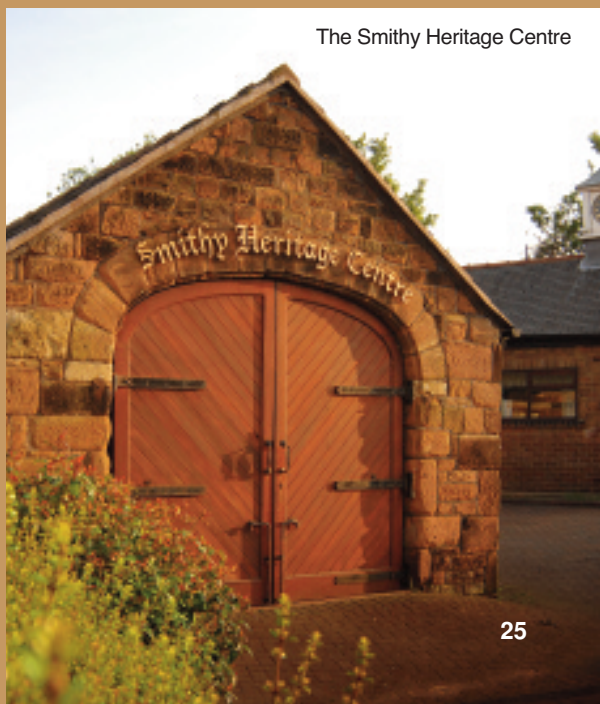
The Smithy Heritage Centre

Kiln Lane, Eccleston, St.Helens WA10 4RA

01744 730744

The Smithy Heritage Centre is a small Local History Museum set in what was the Village Blacksmith Shop in Eccleston. With a permanent collection of Local Blacksmith, Farrier, Wheelwright and Agriculture exhibitions and a further two temporary displays staged each year along with numerous events.

For details of more attractions which are part of the St.Helens Heritage Trail, see page 34, or call St.Helens Tourist Centre 01744 755150 or visit www.visitsthelens.com



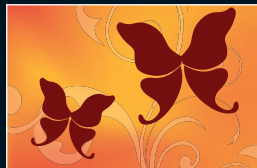
The Smithy Heritage Centre

THE W H G ONES IN 09



MARCH & HYMN TUNE FESTIVAL

6th June - Victoria Square



ST.HELENS FESTIVAL

4th and 5th July - Sherdley Park



BROUHAHA FESTIVAL*

18th July - Church Square



ECLECTICA MUSIC FESTIVAL*

8th August - Victoria Square



ST.HELENS COMEDY FESTIVAL*

14th - 20th September - Various Locations



SPARK IN THE PARK

1st November - Sherdley Park



CHRISTMAS LIGHTS SWITCH ON

14th November - Victoria Square

**Information correct at time of going to print. St.Helens Council accepts no responsibility or liability for any changes to any aspect of any events listed.*

St.Helens Cultural Awards 2008

The new St.Helens Cultural Awards taking place on 27th and 28th February will toast the success and raise the profile of the projects and people that help to make our Borough such a great place to live and visit.

Held at The World of Glass, both events honour and provide recognition for our cultural achievers, both young and old, in all art forms, sport and heritage.

The Youth Cultural Awards is a dedicated event for young people who have demonstrated outstanding cultural merit, while the following evening BBC North West Tonight presenter Ranvir Singh will welcome invited guests to the main Cultural Awards along with keynote speaker, Deputy Chair of the Liverpool Culture Company, Phil Redmond CBE.

The St.Helens Cultural community has much of which to be proud, with a winning combination of creative collaborations and insightful events. These awards will celebrate the accomplishments and showcase the talents of organisations, teams or individuals, who have demonstrated a dedicated, creative and innovative way of promoting and endorsing cultural excellence within our Borough.

Friday 27th February 2009 - Youth Cultural Awards

Categories include:

- St.Helens Young Visual Artist of the Year
- St.Helens Young Performing Artist of the Year (Dance)
- St.Helens Young Performing Artist of the Year (Drama)
- St.Helens Young Musician of the Year
- St.Helens Youth Arts Award - Outstanding Achievement
- St.Helens Outstanding Sporting Achievement Award
- St.Helens Individual Sporting Performance Award

Saturday 28th February 2009 - Cultural Awards

Categories include:

- St.Helens Performing Arts Award
- St.Helens Visual Arts Award
- St.Helens Creative Writing Award
- St.Helens Community Heritage Award
- St.Helens Heritage Project Award
- St.Helens Sporting Volunteer of the Year
- St.Helens Sporting Coach of the Year
- St.Helens Unsung Sporting Hero Sporting Award
- St.Helens Special Award for Services to Culture in St.Helens

For further information, please visit www.sthelens.gov.uk/events or contact Marketing Services on 01744 675326.

GET INVOLVED

No matter what your cultural interest right across St.Helens, there are groups and organisations that provide the ideal opportunity for all of us to really get involved. Here are just some examples, but for details of many more turn to page 32.

ST.HELENS ARTS NETWORK

Meeting on the last Thursday of every month between 4.30-6.30pm at The Citadel, the **St.Helens Arts Network** is a dedicated support and resource for anyone interested in all aspects of the arts. Whether you're a practitioner, teacher or youth worker, come along to meet like-minded individuals, listen to guest speakers from the arts community or take part in a workshop on useful topics. Plus there is also the opportunity to promote what you or your organisation is up to.

For more information or to book a free place, contact Arts Services on 01744 455492.



MUSIC NET

Music Net is an inclusive network for everyone and anyone who participates in a music-related activity in St.Helens. Meeting at The Citadel from 1.30-3.30pm on the first Thursday of every month, organising social events, providing training sessions and keeping its members informed. Membership is free and puts you or your group in touch with the people you need, or need you. So if you want to find an instrument, tutor, or band members, somewhere to perform or to book studio time, Music Net can help you to find the answers.

Join today at www.music-net.org or email info@music-net.org.uk

HANDS ON @ THE CITADEL

With a diverse range of weekly workshops in dance, drama, art, singing and writing available for all ages and abilities, **Hands On @ The Citadel** gives you the chance to participate in a variety of arts activities in a dedicated venue. There is also the opportunity to showcase your newfound talents in devoted performances held at The Citadel and at public events throughout the year.

For further information about activities, call The Citadel on 01744 735436 or visit www.citadel.org.uk

St.Helens Festival



St. Helens Festival

ST.HELENS MUSICIANS' COLLECTIVE

The **St.Helens Musicians' Collective** has, for nearly 20 years, been the main champion of the Borough's vibrant music scene, playing host to hundreds of memorable gigs over the years and giving many bands their first moment in the spotlight. Collective gigs are held on the last Saturday of every month at the Rendezvous Café Bar, Church Street with meetings held every other Tuesday at 7.30pm in Bar Java, Westfield Street.

To get involved, please visit
www.myspace.com/sthelensmusic
or call 07525059042.

ST.HELENS HERITAGE NETWORK

Consisting of many local groups interested in various aspects of local history, the **St.Helens Heritage Network** meet quarterly, working together to help make existing events even better and to plan new events and activities. Plans are already underway for events such as the Annual Exhibition at the Friends' Meeting House in June, The Heritage Zone within the St.Helens Festival in July, and the National Heritage Open Days weekend in September.

To receive the monthly e-newsletter, contact **Chris Coffey** on 01744 817130 or email chrisc Coffey@gmail.com

EVENT PLANNING A HELPING HAND WITH YOUR EVENTS

With hundreds of events taking place throughout St.Helens every year, if you or your organisation needs help with planning or promoting an event then look no further.

Planning Your Event

St.Helens Council's Events Section can advise you on the safe planning and operation of a wide range of events. Through the Events Planning Group, advice is readily available on good practice methods, what Local Authority documentation is required, as well as all you need to know regards the Emergency Services, Security and Stewarding.

Your event plan should be submitted to the group within the timescales outlined in the Events Planning Guide and comments will be returned to you concerning amendments or any additional information that is required.

For a copy of the Events Planning Guide, please visit www.sthelens.gov.uk/events or call 01744 671746.

Promoting Your Event

Once all the plans are in place, St.Helens Council's Marketing Services can then help to publicise your event for FREE.

All you need to do is upload the details to our 'What's On Guide', which can be found at www.sthelens.gov.uk/events. Just click on 'Add Your Event', to create a dedicated web page for your event, containing all the information people will need to know.

Alternatively, sign up to www.mysthelens.org, the most comprehensive directory of community organisations in St.Helens and an essential guide to getting the most out of life in the Borough.

mysthelens.org is a great way to promote and showcase your events. By signing up, you can upload details of any events to both mysthelens.org and the Council website at the same time. Include a photo of your group or event, and it could even be featured on the front page!

More and more people are using this online one-stop-shop to find out what's on and how to get involved in St.Helens' cultural and community life.

For more information call 01744 456886 or, if you do not have access to the Internet, please send all information to Marketing Services, Wesley House, Corporation Street, St.Helens WA10 1HF.

YOUR CULTURAL DIRECTORY

Art

Big Art Project

Contact – Tanya Humphreys
T. 01744 675687
E. tanya@bigartsthelens.com

Billinge Art Club

Contact - Maria Hamilton
T. 01744 603222
E. don.ham@blueyonder.co.uk

CHART: The Art and Calligraphy Group

Contact - Colin Harrison
T. 01744 750257
E. colinharrison6@googlemail.com

Chester Lane Art Group

Contact – John Williams
T. 01744 817798

Christie Art

Contact - Mary Christie
T. 01744 813493
E. marychristie@tiscali.co.uk
W. www.artfair365.co.uk/artists/
marychristie

Creative Crafts Association

Contact – Sandra Mather
T. 01744 750606
E. sandracca@aol.com
W. www.creativecrafts-online.co.uk

Dragonfly Effect

Contact - Tina Culshaw
E. tina.dragonflyeffect@hotmail.co.uk

DS Art

Contact - David Stanley
T. 01744 733359
E. artistand@blueyonder.co.uk
W. www.DS-art.co.uk

Eccleston Park Art Group

Contact - Margaret Rotheram
T. 0151 426 6320
E. keith01@blueyonder.co.uk

Garswood Art Club

Contact - Ruth Clarke
T. 01942 712106
E. actionresources-arc@tiscali.co.uk
W. www.Garswoodartclub.Hobby-
Site.com

Rennies Arts & Crafts

Contact – Susan Yip
T. 01744 739660 F. 01744 734413
E. sue.shoes@live.co.uk
W. www.renniesgallery.co.uk

St.Helens Arts Network

Contact - Cathryn Hegarty
T. 01744 455492
E. cathrynhegarty@sthelens.gov.uk

The Art Club St.Helens

Contact – Joan Birkett or Tony Sudall
E. joanbirkett@blueyonder.co.uk
W. www.sthelensartclub.co.uk

Thursday Evening Portrait Group

Contact - Jack Williams
E. jackandpat54@tiscali.co.uk

The St.Helens Camera Club

Contact - George Burrows or
John Fairclough
T. 0151 426 1693
E. john@fotographicimages.co.uk
E. burr.ge@yahoo.co.uk
www.sthelenscameraclub.co.uk

The Anne Sudworth Studio

T. 01744 753739
E. info@annesudworth.co.uk
W. www.annesudworth.co.uk/artgallery

Urban Gypsies

T. 0161 487 4134
E. info@zehara.co.uk
W. www.zehara.co.uk

Community and Children's Centres

Adult, Community and Family Learning Service

T. 01744 677314 F. 01744 677676
E. adultlearning@sthelens.gov.uk
W. www.sthelens.gov.uk/
adulteducationcourses

Billing Children's Centre

Contact – Lorraine Flynn
T. 01744 678225 F. 01744 678226

Central Link Children's Centre

Contact – Debbie Jones
T. 01744 25868 F. 01744 26616

Chain Lane Community Centre

Contact – Mike Merideth
T. 01744 677705
E. pk.merideth@blueyonder.co.uk

Crownway Community Centre

Contact - Carol Bostock
T. 01925 222907
E. Crownway@btconnect.com
W. www.earlestownbc.org.uk

Eccleston Children's Centre

Contact – Fiona Banner
T. 01744 678211

Four Ways Children's Centre

Contact – Anne Patchett
T. 01744 678026 F. 01744 678029

Haydock Children's Centre

Contact – Sue Swift
T. 01744 678334 F. 01744 678335

Moss Bank Children's Centre

Contact – Sue Case
T. 01744 672020 F. 01744 672033

Newton Family & Community Association

Contact - Anne Keen
T. 01925 224731 F. 01925 299577
E. contact@newtoncommunity
centre.co.uk
W. www.newtoncommunity
centre.co.uk

Newton-le-Willows Children's Centre

Contact - Ann Paulette
T. 01744 672036 F. 01744 672039

Parr Children's Centre

Contact - Christina Kennedy
T. 01744 614340 F. 01744 737571

Peter Street Community Centre

Contact – Denise Brooks
T. 01744 677896
E. dbrook@sthelens.together.org.uk

Rainford Children's Centre

Contact – Lorraine Flynn
T. 01744 678235

Rainhill Children's Centre

Contact – Fiona Banner
T. 01744 678245

Shining Lights Centre

Forest Road, Sutton Manor, St.Helens
WA9 4AT
Contact - Les Dunning
T. 01744 678700 F. 01744 678702
E. les.dunning@sthelens.org.uk

Sutton Children's Centre

Contact – Gill Eaves
T. 01744 822160 F. 01744 822169

Thatto Heath Children's Centre

Contact – Janet Waterhouse
T. 01744 678373 F. 01744 678375

The Thompson Centre

Allanson Street Primary School
T. 01744 678114

Dance

Debonaires Dance Club

Contact - Claire Morris
T. 01744 759466
E. debonaires@btopenworld.com
W. www.debonairesdanceclub.co.uk

El Ghawazee Belly Dance

Contact - Maureen Holmes
T. 0151 426 1524/ 07795280517
E. alan.holmes1944@btinternet.com
W. www.el-ghawazee.org

Horabin School of Dance

Contact - Margaret Horabin
T. 01744 455030

King Academy of Irish Dancing

Contact – Nicola King
T. 07899 937845
E. kingacademy@ymail.com
W. www.kingacademy.co.uk

Silhouette Dance Club

Contact – Marie Morris
T. 01744 20136/ 26338
E. mariemorris@hotmail.com
W. www.silhouettedanceclub.co.uk

St.Helens District Caledonian Society

Contact – Jennifer Johnstone
T. 01744 451663

St.Helens Folk Dance Club

Contact – Ian Arthur
T. 01744 734394
E. i_arthur@btinternet.com

UC Crew

E. uccrewsthelens@yahoo.co.uk
W. www.uccrew.co.uk

Drama

Miniature Bear Foundation

Contact – Carmel Baines
T. 01744 735436
E. info@citadel.org.uk
W. www.citadel.org.uk

Newton Amateur Dramatic and Operatic Society (NADOS)

Contact – Barbara Whitaker
E. info@nados.co.uk
W. www.nados.co.uk

Newton Players

Contact - Liz Dodson
T. 01744 882292

Pilkington Musical Theatre Company

Contact - Jill Roughley
T. 01744 630748
E. roughleys@blueyonder.co.uk
W. www.pilkingtonmusicaltheatre.co.uk

Rainhill Amateur Operatic Society

Contact – Marie Heaton
T. 0151 426 2649
E. m.heaton@blueyonder.co.uk

Rainhill Garrick Society

Contact - Tracey Gough
T. 0151 426 0632
E. tracey.gough@blueyonder.co.uk
W. www.rainhillgarrick.co.uk

Rainford Parish Church Amateur Dramatic Society

Contact - Jane Monk
T. 01744 882272
E. jane.monk@btinternet.com

St.Helens Amateur Operatic Society

Contact - Florence Oldfield
T. 01257 422193
E. fOldfield04@aol.com

St.Helens Gilbert & Sullivan Society

Contact - Marie Holden
T. 01744 612485
E. marholden08@aol.com
W. www.sthelensgss.co.uk

St.Helens Millennium Youth Theatre

Contact – Carmel Baines
T. 01744 735436
E. info@citadel.org.uk
W. www.citadel.org.uk

Theatre Dreams

Contact – Gemma McDermott
T. 07792 360682

Heritage

Fir Tree Farm

Kings Moss, Pimbo Road, St.Helens
WA11 8RG
T. 01744 894 959
W. www.firtreefarmshop.org.uk

Friends' Meeting House

Church Street, St.Helens WA10 1AJ
T. 01744 20908

Just Mackintosh / The World of Charles Rennie Mackintosh

Contact – Pat Marsden
T. 01744 753377 F. 01744 754372
E. pat@justmackintosh.com
W. www.justmackintosh.com

Low House Heritage & Development Group

North Road, St.Helens WA10 2BE
Contact – Marilyn Roberts
T. 01744 22077 F. 01744 23416
E. mroberts@holycrossandlowehouse.co.uk
W. www.stmaryslowehouse.co.uk

Mansion House

Victoria Park, City Road, St.Helens
WA10 2UE
T. 01744 612256

Rainhill Civic Society

Contact - David Whitley
T. 0151 289 3829
E. rainhill-civic@freenet.org.uk
W. www.rainhill-civic-society.org.uk

Sankey Canal Restoration Society (SCARS)

Contact - Peter G Keen
T. 01744 884000
W. www.scars.org.uk

Smithy Heritage Centre

Contact - Joanne Chamberlain
T. 01744 730744
smithyheritagecentre@hotmail.co.uk

St.Helens Association for Research into Local History

Contact - Mary Presland
T. 01744 23141

St.Helens Heritage Network

Contact – Chris Coffey
T. 01744 817130
E. chriscopcoffey@googlemail.com

St.Helens Local History and Archives Library

Contact - Vivien Hainsworth
T. 01744 456952 F. 01744 20836
E. localhistory&archivesservices@sthelens.gov.uk
W. www.sthelenshistory.org.uk

St.Helens Historical Society

Contact - Mary Presland
T. 01744 23141
Or Contact - Margaret Gibbons
T. 01744 20413

St.Helens Parish Church

Church Square, St.Helens WA10 1AF
Contact - Sharon Darlington
T. 01744 22909
W. www.sthelensparishchurch.org

St. Nicholas Heritage Group

Contact - Michelle Alexander
T. 01744 812347
E. stn.heritage@yahoo.co.uk

Sutton Oak Welsh Chapel

Lancots Lane, St.Helens WA9 3EX
T. 01744 604730
W. www.welshchapel.co.nr

The North West Museum of Road Transport

T. 01744 451681
W. www.hallstreetdepot.info

World of Glass

T. 01744 22766
E. info@worldofglass.com
W. www.worldofglass.com

Libraries

Billinge Library

T. 01744 677535 F. 01744 677536
E. billingelibrary@sthelens.gov.uk

Central Library

T. 01744 456954 F. 01744 20836
E. centrallibrary@sthelens.gov.uk

Chester Lane Library

T. 01744 677081 F. 01744 677082
E. chesterlanelibrary@sthelens.gov.uk

Eccleston Library

T. 01744 677575 F. 01744 677577
E. ecclestonlibrary@sthelens.gov.uk

Garswood Library

T. 01744 677797 F. 01744 677797
E. garswoodlibrary@sthelens.gov.uk

Haydock East Library

T. 01744 677801 F. 01744 677802
E. haydocklibrary@sthelens.gov.uk

Moss Bank Community Library

T. 01744 677988 F. 01744 677988
E. mossbanklibrary@sthelens.gov.uk

Newton-le-Willows Community Library

T. 01744 677885 F. 01744 677892
E. newtonlewillowslibrary@sthelens.gov.uk

Parr Community Library

T. 01744 677580 F. 01744 677582
E. parrlibrary@sthelens.gov.uk

Peter Street Library Express

T. 01744 677896 F. 01744 677897
E. peterstreetlibraryexpress@sthelens.gov.uk

Rainford Library

T. 01744 677820 F. 01744 677821
E. rainfordlibrary@sthelens.gov.uk
W. www.sthelens.gov.uk

Rainhill Community Library

T. 01744 677822 F. 01744 677823
E. rainhilllibrary@sthelens.gov.uk

Thatto Heath Community Library

T. 01744 677842 F. 01744 677841
E. thattoheathlibrary@sthelens.gov.uk

Music

Bach to the Future

Contact - Steve Kinsey
T. 01925 220663
E. stevekinsey@blueyonder.co.uk

Catalyst Studios

Contact - Andy Bowes
T. 01744 733222
E. info@catalyst-studios.co.uk
W. www.catalyst-studios.co.uk

Haydock Male Voice Choir

Contact - Alan Gaskell
T. 01744 734176
E. alan.gaskell@talktalk.net
W. www.haydockmvc.com

Music Net

Contact - Karen Machin
E. Karen@music-net.org.uk
W. www.music-net.org.uk

Peter Darwin Music

Contact - Peter Darwin
T. 01744 757812
E. pd001j5999@blueyonder.co.uk

Popskool St.Helens

Contact - Carol Mounsey
T. 07725 127692
E. carol@popskool.com
W. www.popskool.com

Rainford Brass Band

Contact - Catherine Gaskell
T. 07986 707230

Sing Out Choir

T. 01744 735436
E. info@citadel.org.uk

St. Bartholomew's Choir

E. secretary@stbartschoir.com
W. www.stbartschoir.com

St.Helens Musicians' Collective

Contact - Steven Baker
T. 07775877483
E. messer030@AOL.com

St.Helens Sinfonietta

Contact - Gavin or Lyn Wallace
T. 01744 600846
E. GW.sinfonietta@blueyonder.co.uk
W. www.sinfonietta.org.uk

St.Helens Choral Society

Contact - Jessica Bolton
T. 07826 906646
E. info@sthelenschoral.org.uk
W. www.sthelenschoralsociety.org

St.Helens Concert Band

Contact - Keith Owens
T. 0151 7245563
E. puychaudko@yahoo.co.uk
W. www.sthelensconcertband.co.uk

St.Helens Gospel Choir

Contact - Linda
T. 07963 375894
E. gospelmusic@hotmail.co.uk

St.Helens Organ Society

Contact - M Rimmer
T. 01744 637773
W. www.organfax.co.uk/
clubs/st.helens.html

The Citadel Arts Band

Contact - Arthur Gillon
T. 01744 885083

The Cowley Singers

Contact - Marjorie Ashcroft
T. 01744 630937

The Haydock Band

Contact - Mark Quinn
T. 01925 712069 F. 01925 711470
E. markgavin@haydockband.com
W. www.haydockband.com

The Parr Band (Richardson Ltd) St.Helens

Contact - P Eddleston
T. 01744 883157
E. peter-eddleston@blueyonder.co.uk

The Pilkington Choir

Contact - Vivienne Ford
T. 01744 884359

Valley Brass

Contact - Dave Chadwick
T. 07940 509441

Rangers

Mesnes Park

Park Road North, Newton le Willows
T. 01925 229021

Sankey Valley Country Park

Blackbrook Road, St.Helens
T. 01744 677772

Sherdley Park

Marshalls Cross Road, Sutton,
St.Helens
T. 01744 815586

Taylor Park

Grosvenor Road, Eccleston,
St.Helens
T. 01744 678073

Specialist Schools and Colleges

Carmel College

T. 01744 452200
F. 01744 452222
E. info@carmel.ac.uk
W. www.carmel.ac.uk

Cowley Language College

T. 01744 678030 F. 01744 678031
E. cowley@sthelens.org.uk
W. www.cowleylanguagecollege.org.uk

De La Salle School – Performing Arts Status

T. 01744 20511 F. 01744 20543
E. artsadmin.delasalle@sthelens.org.uk
W. www.delasalle.st-helens.sch.uk

Haydock Sports College

T. 01744 678833 F. 01744 678832
E. headteacher@haydockhigh.sthelens.org.uk
W. www.haydock.st-helens.sch.uk

Newton-le-Willows Community High

T. 01925 227209 F. 01925 291335
E. newtonhigh@sthelens.org.uk
W. www.newtonhigh.st-helens.sch.uk

Rainhill High School – Media Arts College

T. 01744 677205 F. 01744 677206
E. rainhillhigh@sthelens.org.uk
W. www.rainhillhighschool.com

Rainford High Technology College

T. 01744 885914 F. 01744 887374
E. hls@rainford.org.uk
W. www.rainford.org.uk

St. Aelred's Catholic Technology College

T. 01925 225974 F. 01925 290759
E. staelred@sthelens.org.uk
W. www.st-aelreds.st-helens.sch.uk

St. Augustine of Canterbury High School – Specialist School for the Visual Arts

T. 01744 678112 F. 01744 678113
E. staugustine@sthelens.org.uk
W. www.st-augustinecanterbury.st-helens.sch.uk/details.html

St. Cuthbert's Catholic Community College for Business and Enterprise

T. 01744 678123 F. 01744 678127
E. stcuthbert@sthelens.org.uk
W. www.stcuthberts.com

St.Helens College - BA (Hons) Culture, Mind and Modernity

Contact - David Rice
T. 01744 623272
E. drice@sthelens.ac.uk
W. www.sthelens.ac.uk/arts/cmm

St.Helens College - BA (Hons) DGD - Digital Graphic Design

Contact - Trevor Green
T. 01744 623140
E. tgreen@sthelens.ac.uk
W. www.enterthevortex.net

Sutton High Sports College

T. 01744 678859 F. 01744 678860
E. sutton.high@sthelens.org.uk
W. www.suttonhigh.org.uk

Sport

Blackbrook JFC

Contact - John Fairhurst
T. 0151 426 7486
E. fairhurst@blueyonder.co.uk

Broadway Leisure Centre

Broadway, Grange Park, St.Helens, Merseyside WA10 3RY
T. 01744 738178

Challenge St.Helens

Contact - Sharon Dutton
T. 01744 22266 F. 01744 613103
E. sharon.dutton@bitopia.co.uk
W. www.challengesthelens.org.uk

Garswood Rambling Club

Contact – Colin Boardman
T. 01942 718318
E. garswoodrc@blueyonder.co.uk
W. www.garswoodrc.co.uk

Haydock Leisure Centre

Contact - Karl Singleton
T. 01744 678833/ 677505
F. 01744 678832
E. ksingleton@haydockhigh.sthelens.org.uk

Haydock Park Racecourse

Newton-le-Willows WA12 0HQ
T. 01942 725963
W. www.haydock-park.co.uk

Judo Education

Contact - Carl Finney
T. 01744 731747 F. 01744 731747
E. carl@judoeducation.co.uk

Kick Soccer School

Contact – Tony Greenall or Ian Smith
T. 01744 629460

Lancashire Powerboat Racing Club

Carr Mill Dam, Garswood Old Road
WA11 7LZ
T. 01744 25494
E. secretary@lprc.info
W. www.lprc.info

Liverpool St.Helens Junior Rugby

Contact - John Foster
T. 01744 25708
E. lshjuniors@hotmail.co.uk
W. www.liverpoolsthelensrugby.co.uk

Liverpool St.Helens (Rugby) Football Club

Contact - John Bithell
T. 01744 25708 / 0151 426 2464
E. j.bithell@tiscali.co.uk
W. www.liverpoolsthelensrugby.co.uk

Newton Ladies' Hockey

Contact - J Wilson
T. 01925 224208
E. jlwilson@blueyonder.co.uk

Newton-le-Willows Anglers

Contact - Eddie Marcroft
T. 01925 292231
W. www.newtonangling.com

North West Pilates & Yoga Centre

Contact - Nisha Srivastava
T. 01744 751115 F. 01744 751115
E. nisha_nsrivastava@hotmail.com
W. www.pilates4sport.com

Parr Swimming & Fitness Centre

Ashcroft Street, St.Helens WA9 1BQ
T. 01744 677236 F. 01744 677236

Pilkington Rounders Club

Contact - Mrs J A Bailey
T. 01744 453398
E. jax63@hotmail.co.uk

Queens Park Leisure Centre

Boundary Road, St.Helens WA10 2LT
T. 01744 677465

Rainford Cricket Club

Contact - Ian Harrison
T. 01744 886296
E. ian.harrison44@hotmail.co.uk

Ramblers' Association (St.Helens Group)

Contact - Carol Walsh
T. 01744 601608
E. carol.walshram@blueyonder.co.uk
W. www.sthelensramblers.webeden.co.uk

Ruskin Leisure Centre

Contact - Rob Gerrard
T. 01744 28866 F. 01744 454280
E. rob.gerrard@ruskinleisure.co.uk
W. www.ruskinleisure.co.uk

Selwyn Jones Sports Centre

Ashton Road, Newton-le-Willows
WA12 0AQ
T. 01744 677970 F. 01744 677181

Sherdley Park Golf Course

Sherdley Road, St.Helens WA9 5DE
T. 01744 813149 F. 01744 817967

Sherdley Park Golf Driving Range

Marshalls Cross Road, St.Helens
T. 01744 612509 F. 01744 817967

St.Helens and District Rambling Club

Contact - Dennis or Jackie Price
T. 0151 426 3221
E. dandj.price@btinternet.com
W. www.btinternet.com/~dandjwalks/SHDRC/Shdrc

St.Helens District Sports Council

Contact - Frederica Crawford
T. 01744 753798
E. fmcsthds@btopenworld.com
W. www.sthelensdsc.org

St.Helens Friends of Spartac

Contact - Beverley Illidge
T. 01744 757163
E. theillidges@hotmail.com

St.Helens Mountaineering Club

Contact - Ken McWilliam
T. 01925 226680
W. www.sthelensmc.org.uk

St.Helens Rugby League Club

Dunriding Lane, St.Helens WA10 4AD
T. 01744 455050
W. www.saintsrffc.com/

St.Helens Star Centre

Contact - Frederica Crawford
T. 01744 753798
E. fred.crawford1@btinternet.com

St.Helens Swimming Club

Contact - Shaun Woodward
T. 07736 015248
E. chairman@sthelenssc.org
W. www.sthelensswimmingclub.co.uk

St.Helens Swim Training Scheme

Contact - Helen Billington
T. 01744 732 656
E. helen_bill_2005@hotmail.co.uk

St.Helens Synchro Club

Contact - Cheryl Hastings
T. 07835 663877
E. cheggers777@hotmail.com

St.Helens Wild Boars

Contact - Joanne Dyas
T. 01744 635045
E. ddyas@blueyonder.co.uk

Sutton Badminton Club

Contact - Linda Eccleston
T. 01744 630605
E. suttonbadminton@blueyonder.co.uk
W. www.sthelensbadminton.co.uk

Sutton Leisure Centre

Elton Head Road, St.Helens WA9 5AU
T. 01744 677375

Thatto Heath Crusaders ARLFC

Contact - Janet Haselden
T. 07730 405530
E. info@thattoheathcrusaders.org
W. www.thattoheathcrusaders.org

Venues

The Citadel

Waterloo Street, St.Helens WA10 1PX
T. 01744 735436
W. www.citadel.org.uk

Theatre Royal

Corporation Street, St.Helens, Merseyside WA10 1LQ
T. 01744 756000
W. www.sthelenstheatreroyal.com

Writing

Citi-Dis Arts

Contact - Terry Caffrey
T. 01744 735436
W. www.citadel.org.uk

Citadel Writers with Disabilities

Contact - Terry Caffrey
T. 01744 735436
W. www.citadel.org.uk

St.Helens Writers' Circle

Contact - Jonathan Griffith
E. jongriffith3@netscape.net

St.Helens Writers Club

Contact - Norman Davies
T. 01744 752400

WANT TO KNOW MORE?

Each one of the groups or organisations listed in this directory will be holding a range of events throughout 2009. For further information, please visit www.sthelens.gov.uk/events or www.visitsthelens.com

No group or organisation has been intentionally omitted from this guide. Information has been provided by each individual organisation and permission granted for its inclusion; therefore, St.Helens Council accepts no responsibility for any errors or omissions.



access  st.helens

it's easy to contact us

St.Helens Council offers a translation and interpretation service covering foreign languages, British Sign Language, Braille and audio tape.

For a translation of any St.Helens Council publication, please provide your name and address and the name of the language you require to the Contact Centre, quoting the title and/or reference number of the document.



Contact Centre, Wesley House, Corporation Street,
St.Helens, Merseyside WA10 1HF



Tel: (01744) 456789
Minicom: (01744) 671671
Fax: (01744) 456895



contactcentre@sthelens.gov.uk



www.sthelens.gov.uk



St.Helens
Council

st.helens

The Heart of the Northwest